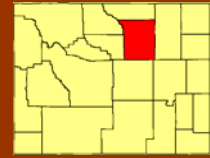


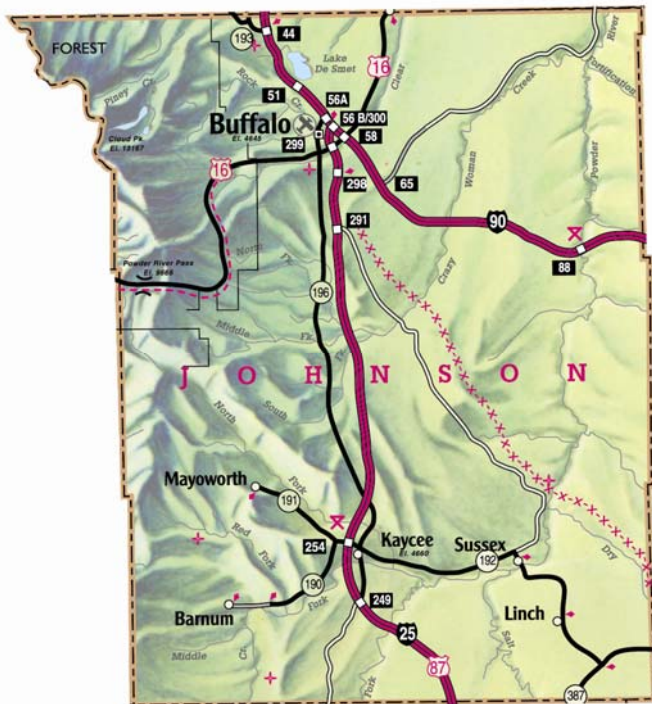
# Johnson County, Wyoming

## County Profile



**2007 Population:** 8,142  
**Land Area:** 4,166 sq. mi.  
**Persons per sq. mi.:** 1.95  
**County Seat:** Buffalo  
 (pop. 4,597)

Source: Wyoming Economic Analysis Division, July 2007



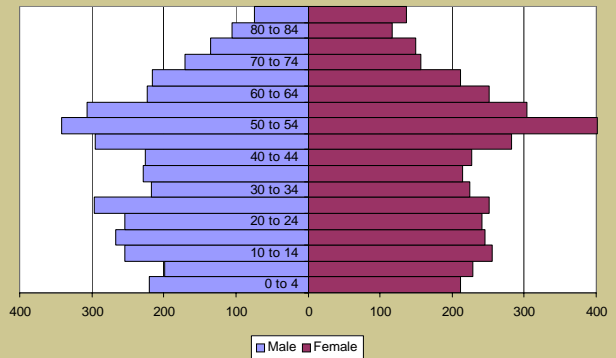
### Population Distribution

Age	2007 estimate
<19	1,880
20-34	1,486
35-54	2,218
55-74	1,840
75+	718

Median Age 43.0

Source: U.S Census Bureau

### 2007 Distribution by Age by Sex



Source: US Census Bureau

### Cost of Living Index

<b>Overall</b>	<b>99</b>
Food	108
Housing	93
Apparel	135
Transportation	101
Medical	101
Recreation & Personal Care	95

Source: State of Wyoming Economic Analysis Division  
Prices as of January 9, 10, 11 2008

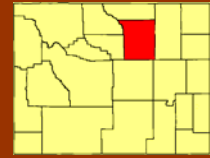
### Household Income

	2006 estimate
Per Capita Personal Income	\$36,074
Average Price of Single-Family Home (2006)	\$194,500

Source: US Bureau of Economic Analysis  
A Profile of Wyoming Demographics, Economics and Housing - August 2008 ([www.wyomingcda.com](http://www.wyomingcda.com))

# Johnson County, Wyoming

## County Profile



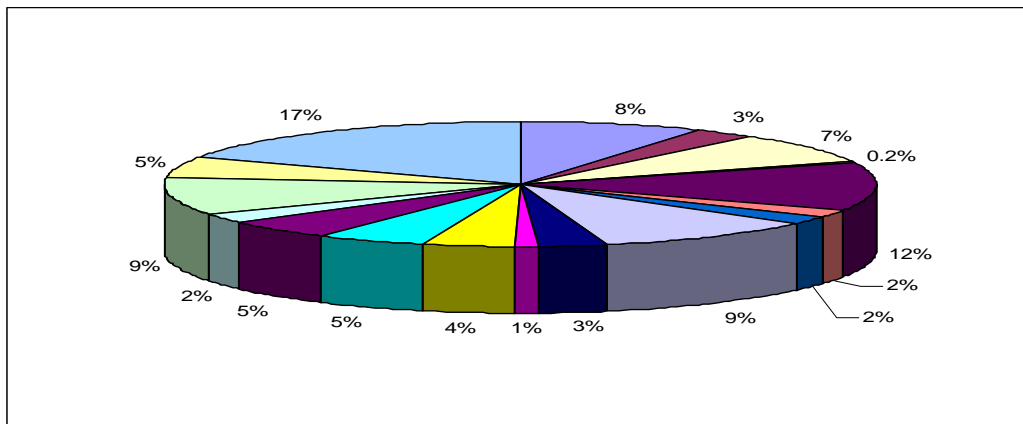
### Employment by Industry

Total employment		5,785	
Farm employment	448	8%	
Forestry, fishing, related activities, and other 3/	157	3%	
Mining	428	7%	
Utilities	10	0.2%	
Construction	683	12%	
Manufacturing	110	2%	
Wholesale trade	102	2%	
Retail Trade	549	9%	
Transportation and warehousing	167	3%	
Information	56	1%	
Finance and insurance	229	4%	
Real estate and rental and leasing	272	5%	
Professional and technical services	263	5%	
Management of companies and enterprises	#		
Administrative and waste services	#		
Educational services	#		
Health care and social assistance	#		
Arts, entertainment, and recreation	138	2%	
Accommodation and food services	525	9%	
Other services, except public administration	303	5%	
Government and government enterprises	958	17%	

Source: U.S. Census Bureau

# Not shown to avoid disclosure of confidential information, but the estimates for this item are included in the totals.

\$ Less than 10 jobs, but the estimates for this item are included in the totals.



### Unemployment

Labor Force	4,219
Employed	4,070
Unemployed	130
<b>Unemployment Rate</b>	<b>3.5%</b>

Source: Wyoming Labor Market Information, June 2008



### Median Salaries

#### Unskilled

Crater/Packer II	\$19,715
Light Assembler II	\$20,032
Material Handler II	\$21,063
Packer/Packager, Hand	\$17,183

#### Semi-Skilled

Crushing, Grinding, and Mixing Machine Operation	\$19,603
Heavy Assembler II	\$25,040
Machine Tool Cutting Operator/Tender	\$21,065
Punch Press Operator	\$23,449

#### Skilled

Assembly Supervisor	\$44,416
Machinist II	\$30,949
Intermediate Tool & Die Maker	\$35,581
Welder II	\$29,327

#### Technical

Electric/Electronics Technician II	\$31,794
Electrician I	\$28,326
PC Maintenance Technician II	\$37,126
Telecommunications Technician II	\$38,123

#### Information Technology

Database Administrator	\$62,190
Mainframe Programmer II	\$44,683
Programmer I	\$37,402
Webmaster	\$49,218

#### Clerical

Account Representative	\$20,829
Customer Service Representative II	\$26,370
Receptionist	\$19,839
Telemarketer	\$22,122

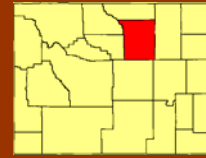
#### Professional

Employment Manager	\$60,310
Materials Manager	\$58,717
Payroll Administrator	\$34,442
Production Control Manager	\$56,900

Source: [www.salary.com](http://www.salary.com)

# Johnson County, Wyoming

## County Profile



### Major Employers

	Company	Employees	Product/Service
1.	Johnson Co. Mem. Hospital	238	Health Care
2.	Johnson Co. School District	227	Education
3.	Three Way, Inc	193	Pipe Line Contractors
4.	Johnson County Government	82	County Government
5.	Bureau of Land Management	80	Federal Government
6.	SANJEL, Inc	50	Oilfield Service
7.	DJ's Thriftway	50	Grocery Store
8.	City of Buffalo	47	City Government
9.	Best Western Crossroads Inn	42	Hotel
10.	Rocky Mountain IGA	45	Grocery Store

Source: Buffalo Chamber of Commerce

### Education (2006-2007)

Johnson County School District Enrollment	1,261
Average Student Teacher Ratio	10.7:1
Graduation Rate	90.7%
Expenditures per Average Daily Membership	\$14,109

Source: Wyoming Department of Education

### Higher Education Facilities (2007)

Facility	Enrollment
Northern Wyoming Community College District - Sheridan, WY ( <a href="http://www.sheridan.edu">www.sheridan.edu</a> )	2,766
University of Wyoming - Laramie, WY ( <a href="http://www.uwyo.edu">www.uwyo.edu</a> )	13,223

Source: Wyoming Community College Commission, University of Wyoming

# Johnson County, Wyoming

## County Profile



### Telecommunications

<b>Bresnan Communications</b> 140 E Loucks Sheridan, WY 82801 Phone: 877.BRESNAN Website: <a href="http://www.bresnan.com">www.bresnan.com</a>	<b>Service area:</b> Buffalo <b>Internet Service:</b> Coaxial Broadband <b>Web Management:</b> Web Hosting Service, Video Solutions, Static IP Address
<b>Net Wright LLC</b> P.O. Box 1747 Riverton, WY 82501 Phone: 307.857.5800 Fax: 307.857.1053 Website: <a href="http://www.netwright.net">www.netwright.net</a>	<b>Service area:</b> Buffalo <b>Internet Service:</b> ATM DS3 (45 MB), ATM IMA (3 to 12 MB), ATM T-1
<b>OneWest.net</b> 937 W Main Street Riverton, WY 82501 Phone: 800.ONE.WEST Website: <a href="http://www.onewest.net">www.onewest.net</a>	<b>Service area:</b> Buffalo <b>Internet Service:</b> DSL, <b>Web Management:</b> Web Hosting
<b>RT Connect</b> 130 South Ninth Street Worland, WY 82401 Phone: 307.347.7275 Fax: 307.347.6366 Website: <a href="http://www.rtcom.net">www.rtcom.net</a>	<b>Service area:</b> Kaycee <b>Internet Service:</b> DSL
<b>Qwest Communications</b> 103 North Durbin, Room 1 Casper, WY 82601 Phone: 307.234.1107 Fax: 307.235.2618 Website: <a href="http://www.qwest.com">www.qwest.com</a>	<b>Service area:</b> Buffalo, Kaycee <b>Telephone Service:</b> Local and Long Distance, Private Line <b>Internet Service:</b> 56& 64 Data Connections, ATM, Centrex, Digital Switched Services, DSL, Frame Relay, ISDN-BRI, ISDN-PRI, PBX, Redundancy, T-1 <b>Web Management:</b> Web Hosting
<b>Visionary</b> P.O. Box 2799 Gillette, WY 82717 Phone: 888.682.1884 Fax: 307.682.2519 Website: <a href="http://www.vcn.com">www.vcn.com</a>	<b>Service area:</b> Buffalo, Kaycee <b>Internet Service:</b> DSL, T-1, Wireless <b>Web Management:</b> Web Hosting
<b>Wyoming.com</b> 937 W Main Street Riverton, WY 82501 Phone: 800.588.3304 Website: <a href="http://www.wyoming.com">www.wyoming.com</a>	<b>Service area:</b> Buffalo <b>Internet Service:</b> DSL, Wireless, T-1, Frame Relay <b>Web Management:</b> Web Hosting, Web Design

# Johnson County, Wyoming

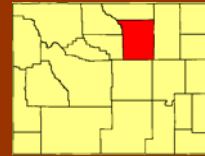
## County Profile



### Power Cost (cents/KWh)

	Industrial	Commercial	Residential
<b>Big Horn REA</b> 208 South 5 <sup>th</sup> Street Basin, WY 82410 (800) 564-2419	\$0.0413	\$0.0665	\$0.0889
<b>High Plains REA.</b> Casper, WY 82601 (307) 473-1525	\$0.0384	\$0.0723	\$0.0798
<b>Powder River Energy</b> Kaycee, WY 82639 (307) 738-2507	\$0.0318	\$0.0497	\$0.0636
<b>Rocky Mountain Power</b> 825 NE Multnomah Portland, OR 97232 (888) 221-7070	\$0.0381	\$0.0595	\$0.0688

Source: Wyoming Public Service Commission, 2004



### Transportation

#### Airports

##### Sheridan County (SHR)

2 miles southwest of Sheridan

Commercial Service: Great Lakes (United Express)

Daily flights to: Denver

Fixed Base Operators: Big Horn Airways

Runways: 8,300 x 100 ft., asphalt

5,037 x 150 ft., asphalt

##### Johnson County (BYG)

3 miles northwest of Buffalo

Runway: 6,142 x 75 ft., asphalt

Fixed Base Operators: Johnson County Aero

#### Highways

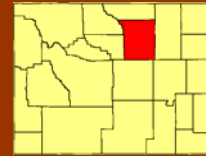
Interstate 25

Interstate 90

U.S. Highway 16

#### Railroad

None

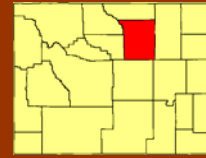


### Workforce Training

- Wyoming Department of Workforce Services offers employers up to \$4,000 per employee for training.  
<http://wyomingworkforce.org/how/wdftp.aspx>
- Quick Start  
Wyoming is the first state approved to license the State of Georgia's Quick Start program. The Wyoming Business Council and the Wyoming Community Colleges are partnering to provide training in:
  - Customer Service
  - Manufacturing
  - Warehousing and Distribution<http://www.wyomingbusiness.org>

### State Incentives

- No corporate state income tax.
- No personal state income tax.
- Community Development Block Grants administered by Wyoming Business Council. ([www.wyomingbusiness.org](http://www.wyomingbusiness.org))
  - Provides grants to local governments for community and economic development projects.
  - Provides convertible loans to grants based on job creation.
- Partnership Challenge Loan Program administered by Wyoming Business Council.
  - Provides low interest loans to community development organizations.
  - Provides gap financing for projects with the Wyoming Business Council participating with a commercial lender.
- Industrial Development Revenue Bonds. Cities and counties may issue tax-exempt bonds to provide financing for manufacturing.



### Taxes

- No corporate state income tax.
- No personal state income tax.
- No inventory tax.
- Johnson County has a 5% sales and use tax (statewide base of 4% plus 1% capital facilities tax).  
*Source: Wyoming Department of Revenue, Excise Division (April 2008)*
- Unemployment Insurance - taxable base rate of \$20,100. Tax rates by industry grouping - WY Dept. of Employment.  
(<http://wydoe.state.wy.us/doe.asp?ID=831>)
- Workers' Compensation- rates vary by occupation and can be found at <http://wydoe.state.wy.us/doe.asp?ID=803>
- Property taxes. Average tax rate in Johnson County is 7.1329%  
*Source: Wyoming Department of Revenue, Ad Valorem Division (2007)*

#### Tax computation:

Fair Market Value of Property \* Level of Assessment (9.5% for Residential and Commercial Property) \* Tax Rate

**Example:** Tax on a commercial facility valued at \$1,000,000 is as follows:  $\$1,000,000 \times 0.095 = \$95,000 \times 0.071329 = \$6,776$ .

State assesses agricultural lands at 9.5% of agricultural value, residential and commercial at 9.5% and Industrial at 11.5% of fair market value.