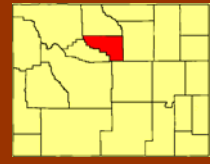


Washakie County, Wyoming

County Profile



2007 Population: 7,816
Land Area: 2,240 sq. mi.
Persons per sq. mi.: 3.44
County Seat: Worland
 (pop. 4,940)

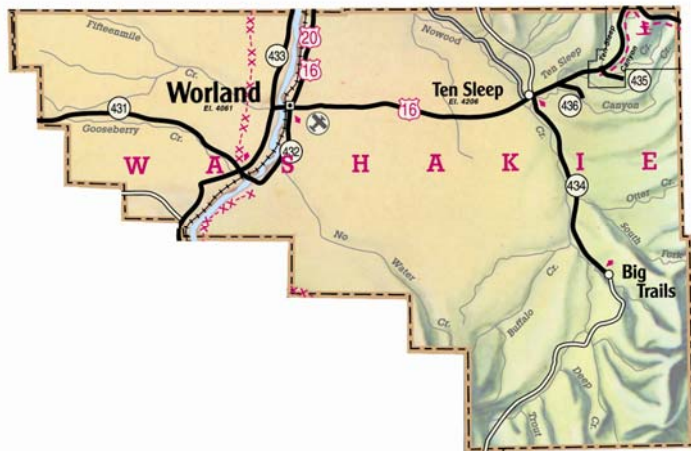
Source: Wyoming Economic Analysis Division, July 2007

Population Distribution

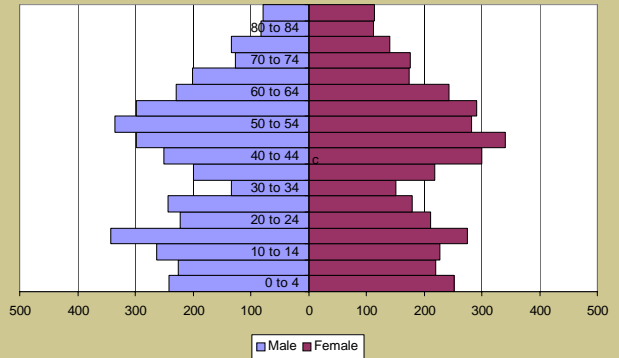
Age	2007 estimate
<19	2,048
20-34	1,142
35-54	2,225
55-74	1,740
75+	661

Median Age 43.1

Source: US Census Bureau



2007 Distribution by Age by Sex



Source: US Census Bureau

Cost of Living Index

Overall	89
Food	99
Housing	77
Apparel	103
Transportation	101
Medical	103
Recreation & Personal Care	100

Source: State of Wyoming Economic Analysis Division
Prices as of January 8, 9, 10, 2008

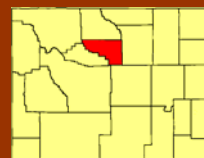
Household Income

	2007 estimate
Per Capita Personal Income	\$39,082
Average Price of Single-Family Home (2006)	\$123,072

Source: US Bureau of Economic Analysis
A Profile of Wyoming Demographics, Economics and Housing - August, 2007

Washakie County, Wyoming

County Profile



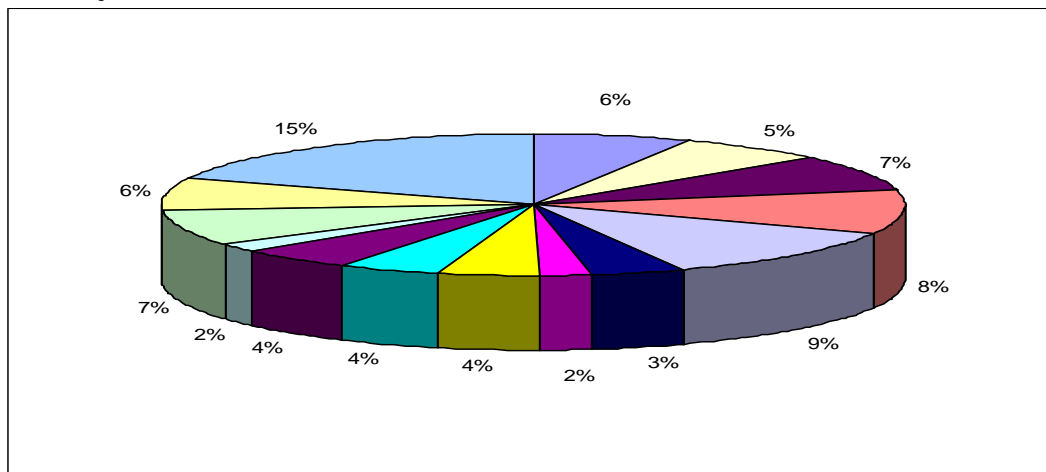
Employment by Industry

Total employment		5,614	
Farm employment	313	6%	
Forestry, fishing, related activities, and other 3/	#		
Mining	297	5%	
Utilities	#		
Construction	385	7%	
Manufacturing	456	8%	
Wholesale trade	#		
Retail Trade	532	9%	
Transportation and warehousing	193	3%	
Information	95	2%	
Finance and insurance	203	4%	
Real estate and rental and leasing	213	4%	
Professional and technical services	221	4%	
Management of companies and enterprises	#		
Administrative and waste services	#		
Educational services	#		
Health care and social assistance	#		
Arts, entertainment, and recreation	88	2%	
Accommodation and food services	376	7%	
Other services, except public administration	336	6%	
Government and government enterprises	868	15%	

Source: U.S. Census Bureau

Not shown to avoid disclosure of confidential information, but the estimates for this item are included in the totals.

\$ Less than 10 jobs, but the estimates for this item are included in the totals.



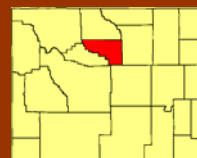
Unemployment

Labor Force	4,203
Employed	4,065
Unemployed	138
Unemployment Rate	3.3%

Source: Wyoming Labor Market Information, June 2008

Washakie County, Wyoming

County Profile



Median Salaries

Unskilled

Crater/Packer II	\$19,760
Light Assembler II	\$20,078
Material Handler II	\$21,110
Packer/Packager, Hand	\$17,224

Semi-Skilled

Crushing, Grinding, and Mixing Machine Operation	\$19,644
Heavy Assembler II	\$25,097
Machine Tool Cutting Operator/Tender	\$21,110
Punch Press Operator	\$23,502

Skilled

Assembly Supervisor	\$44,513
Machinist II	\$31,019
Intermediate Tool & Die Maker	\$35,662
Welder II	\$29,396

Technical

Electric/Electronics Technician II	\$31,866
Electrician I	\$28,395
PC Maintenance Technician II	\$37,223
Telecommunications Technician II	\$38,216

Information Technology

Database Administrator	\$62,348
Mainframe Programmer II	\$44,797
Programmer I	\$37,495
Webmaster	\$49,344

Clerical

Account Representative	\$20,877
Customer Service Representative II	\$26,431
Receptionist	\$19,884
Telemarketer	\$22,169

Professional

Employment Manager	\$60,449
Materials Manager	\$58,852
Payroll Administrator	\$34,523
Production Control Manager	\$57,031

Source: www.salary.com

Washakie County, Wyoming

County Profile



Major Employers

	Company	Employees	Product/Service
1.	Washakie Co. School Dist. 1	278	Education
2.	Washakie Medical Center	137	Health Care
3.	Schlumberger Technology	102	Oilfield Services
4.	Crown Cork & Seal	89	Mftr., Aluminum Cans
5.	Fremont Beverage, Inc	73	Bottling Facility
6.	Bureau of Land Management	64	Government Services
7.	McGarvin Moberly Const.	35	Asphalt Contractor
8.	Wyoming Sugar Co, LLC	60	Sugar Processor
9.	Washakie County	56	Government Services
10.	RT Communications, Inc	53	Telephone Services
11.	City of Worland	50	Government Services
12.	MBA	28	Insurance Services
13.	Wyoming Gas	24	Natural Gas Dist.
14.	NOWCAP (Northwest Community Action Programs)	20	Non-Profit Employment Services

Source: Washakie Development Association

Education (2006-2007)

Washakie County School District Enrollment	1,410
Average Student Teacher Ratio	10.06:1
Graduation Rate	82.25%
Expenditures per Average Daily Membership	\$20,852

Source: Wyoming Department of Education

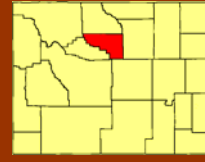
Higher Education Facilities (2007)

Facility	Enrollment
Northwest College - Campuses in Powell, Cody and Worland (www.northwestcollege.edu)	1,691
University of Wyoming - Laramie, WY (www.uwyo.edu)	13,223

Source: Wyoming Community College Commission, University of Wyoming

Washakie County, Wyoming

County Profile



Telecommunications

RT Communications
130 South Ninth Street
Worland, WY 82401
Phone: (307) 347-7000
Fax: (307) 347-6366
Website: www.rtcom.net
Services offered: (Worland only)

TRI County Telephone
P. O. Box 310
Basin, WY 82410
Phone: (307) 568-2427
Fax: (307) 235-2618
Website: www.tctwest.net
Services offered: (Ten Sleep only) DSL, ISDN-BRI, T-1, Web Hosting

Visionary
P.O. Box 2799
Gillette, WY 82717
Phone: (888) 682-1884
Fax: (307) 682-2519
Website: www.vcn.com
(All other incorporated communities): Web Hosting.

Source: Wyoming Interactive Business Center, Wyoming Business Council

Power Cost

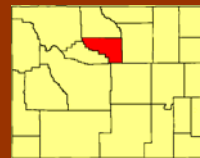
Weighted Average Cost per kWh of Power	2001
Cents per kWh of industrial power	3.24
Cents per kWh of commercial power	5.19
Cents per kWh of residential power	6.51

	Industrial	Commercial	Residential
High Plains Power, Inc. (2001) 203 North 1 st Dubois, WY 82513 (307) 455-2473	3.54	6.19	7.21
Rocky Mountain Power (2001) 825 NE Multnomah Portland, OR 97232 (888) 221-7070	3.24	5.14	6.44

Source: ACN (U. S. Department of Energy, Energy Information Administration)

Washakie County, Wyoming

County Profile



Transportation

Airports

Worland Municipal (WRL)
3 miles south of Worland
Commercial Service: Great Lakes (United Express)
Daily Flights to: Denver, Laramie
Runway: 7,004 x 100 ft., asphalt
Fixed Base Operators: Sky Aviation

Highways

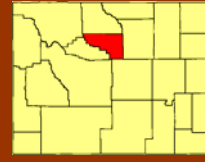
Distance from Worland to nearest Interstate highway (I-25) = 90 miles
U. S. Highway 16

Railroad

Burlington Northern Santa Fe

Washakie County, Wyoming

County Profile

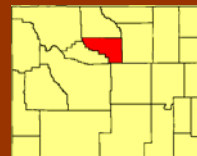


Workforce Training

- Wyoming Department of Workforce Services offers employers up to \$4,000 per employee for training.
<http://wyomingworkforce.org/how/wdftp.aspx>
- Quick Start
Wyoming is the first state approved to license the State of Georgia's Quick Start program. The Wyoming Business Council and the Wyoming Community Colleges are partnering to provide training in:
 - Customer Service
 - Manufacturing
 - Warehousing and Distribution<http://www.wyomingbusiness.org>

State Incentives

- No corporate state income tax.
- No personal state income tax.
- Community Development Block Grants administered by Wyoming Business Council. (www.wyomingbusiness.org)
 - Provides grants to local governments for community and economic development projects.
 - Provides convertible loans to grants based on job creation.
- Partnership Challenge Loan Program administered by Wyoming Business Council.
 - Provides low interest loans to community development organizations.
 - Provides gap financing for projects with the Wyoming Business Council participating with a commercial lender.
- Industrial Development Revenue Bonds. Cities and counties may issue tax-exempt bonds to provide financing for manufacturing.



Taxes

- No corporate state income tax.
- No personal state income tax.
- No inventory tax.
- Washakie County has 5% sales and use tax (4% state base tax and a 1% specific purpose county tax.)
Source: Wyoming Department of Revenue, Excise Division (April 2008)
- Unemployment Insurance - taxable base rate of \$20,100. Tax rates by industry grouping - WY Dept. of Employment.
(<http://wydoe.state.wy.us>)
- Workers' Compensation- rates vary by occupation and can be found at <http://wydoe.state.wy.us>
- Property taxes. Average tax rate in Washakie County is 7.0207%
Source: Wyoming Department of Revenue, Ad Valorem Division (September 2007)

Tax computation:

Fair Market Value of Property * Level of Assessment (9.5% for Residential and Commercial Property) * Tax Rate

Example: Tax on a commercial facility valued at \$1,000,000 is as follows: $\$1,000,000 \times 0.095 = \$95,000 \times 0.070207 = \$6,670$.

State assesses agricultural lands at 9.5% of agricultural value, residential and commercial at 9.5% and Industrial at 11.5% of fair market value.