

May 2009 Employment Data

Month over Month Employment

Unemployment

- Wyoming's unemployment rate rose in May from 4.5% to 5.0% (highest since June 1999).
- The U.S. unemployment rate increased in May from 8.9% to 9.4%.

Total Employment

- Total employment increased by 6,100 jobs in May (normal seasonal increase is 7,500 jobs).

Employment by Industry

- The month over month increases were in:
 - Leisure & Hospitality (2,400 jobs, 7.7%)
 - Construction (1,700 jobs, 7.0%)
 - Government (1,500 jobs, 2.1%)
 - Professional & Business Services (700 jobs, 4.0%)
 - Retail Trade (500 jobs, 1.6%)
 - Wholesale Trade (200 jobs, 2.2%)
 - Transportation & Utilities (100 jobs, 0.7%)
 - Manufacturing (100 jobs, 1.0%)
 - Natural Resources & Mining fell by 1,000 jobs, a decline of 3.7%
 - Other Services fell by 100 jobs, a decline of 0.8%
-

Year over Year Employment

- Wyoming continues to outperform the national economy (% change).

Total Employment

- Since May 2008, total employment in Wyoming has fallen by 4,900 jobs or 1.6%. The U.S. has decreased by 5,523,000 jobs or -4.0% over the same period.
- Wyoming's annual employment decline of -1.6% (May 2009 over May 2008) fell from #4 to #5 in May.
- Other Mountain states posted growth/decline in May as follows:
 - Montana - 2.2%
 - New Mexico - 2.4%
 - Utah - 3.3%
 - Colorado - 4.1%
 - Idaho - 5.7%
 - Nevada - 6.3%
 - Arizona - 7.1%

Employment by Industry

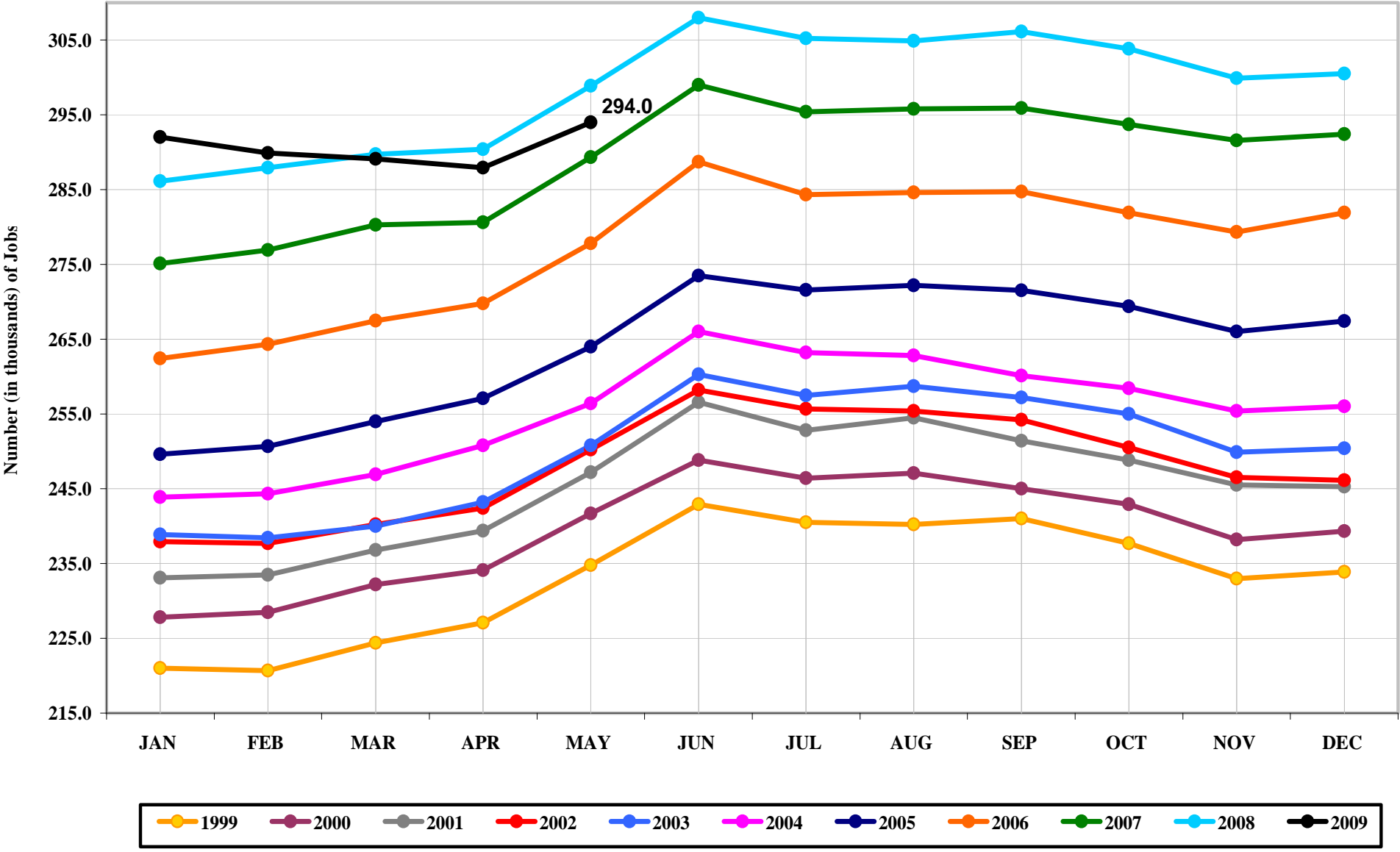
- Year over year increases by industry include:
 - Government (1,400 jobs, 2.0%)
 - Education & Health Services (700 jobs, 2.9%)
 - Transportation & Utilities (100 jobs, 0.7%)
 - Wholesale Trade (100 jobs, 1.1%)

- Employment has fallen in eight industries since May 2008
 - Natural Resources & Mining (-2,500 jobs, -8.7%)
 - Construction (-2,400 jobs, -8.5%)
 - Professional & Business Services (-700 jobs, -3.7%)
 - Leisure & Hospitality (-700 jobs, -2.1%)
 - Retail Trade (-500 jobs, -1.6%)
 - Other Services (-200 jobs, -1.6%)
 - Financial Activities (-100 jobs, -0.9%)
 - Manufacturing (-100 jobs, -1.0%)

- Employment has remained unchanged in one industry since May 2008
 - Information

*Sources: Wyoming Department of Labor, Research & Planning
U.S. Department of Labor, Bureau of Labor Statistics*

Wyoming Total Employment, 1/99 - 5/09



Current Employment Statistics (CES) data released by the Wyoming Department of Employment, Research & Planning Division (<http://wydoe.state.wy.us/lmi>)